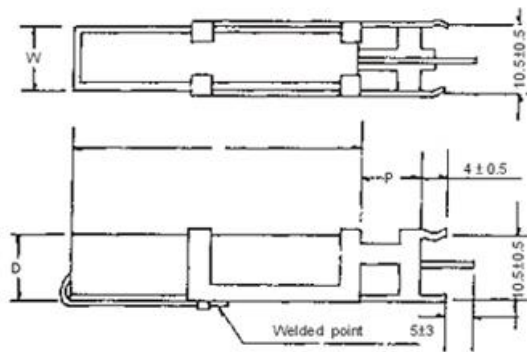


福緯企業有限公司

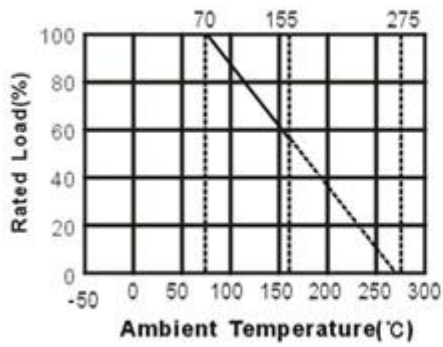
FORWILL ENTERPRISE CO., LTD

SQS

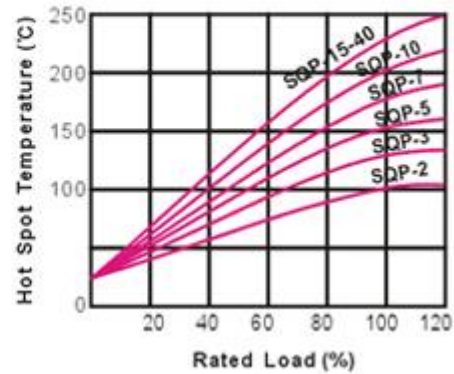


Style	DIMENSIONS(mm ± 1mm)				RESISTANCE RANGE Ω	
	L	W	D	P	Wirewound	RS
SQS-5	10	9	22	5	0.1 Ω ~ 100 Ω	100 Ω ~ 50K Ω
SQS-7	10	9	35	10	0.1 Ω ~ 100 Ω	100 Ω ~ 50K Ω
SQS-10	10	9	48	10	0.1 Ω ~ 100 Ω	100 Ω ~ 50K Ω
SQS-20	60	14	13	10	0.1 Ω ~ 100 Ω	100 Ω ~ 50K Ω

## DERATING CURVE



## TEMPERATURE RISE



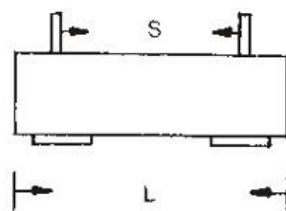
## CHARACTERISTICS

REQUIREMENTS	CHARACTERISTICS
Temperature Coefficient	$\pm 300\text{PPM}/^\circ\text{C}$ $< 20\ \Omega$ $\pm 400\text{PPM}/^\circ\text{C}$
Insulation Resistance	$> 100\text{M}\Omega$
Load Life (1,000 hours)	$\pm (2\% + 0.05\ \Omega)$
Short-time Overload	$\pm (2\% + 0.05\ \Omega)$
Dielectric Withstanding Voltage	$\pm (1\% + 0.05\ \Omega)$
Moisture Resistance	$\pm (3\% + 0.05\ \Omega)$
Shock and Vibration	$\pm (1\% + 0.05\ \Omega)$
Soldering Heat	$\pm (1\% + 0.05\ \Omega)$
Incombustibility	EX16 TimeS V., 5 min

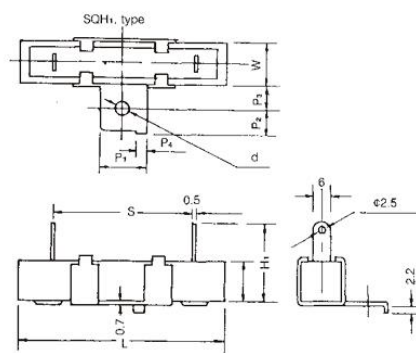
## HEAT RISE CHART



## SQH



## SQHG



Type	W	RESISTANCE RANGE $\Omega$		DIMENSIONS(mm)									
		SQH	MO + SQH	L $\pm$ 2	H $\pm$ 1	W $\pm$ 1	S $\pm$ 1	H $\pm$ 1	P1 $\pm$ 1	P2 $\pm$ 1	P3 $\pm$ 1	P4 $\pm$ 1	d
SQH-10	10	0.5 $\Omega$ ~ 100 $\Omega$	101 $\Omega$ ~ 50K $\Omega$	48.0	10.0	10.0	33	21	12	6	8.0	3.0	4
SQH-15	15	1 $\Omega$ ~ 100 $\Omega$	101 $\Omega$ ~ 100K $\Omega$	48.0	12.0	12.0	33	21	12	6	8.0	3.0	4
SQH-20	20	1 $\Omega$ ~ 100 $\Omega$	101 $\Omega$ ~ 100K $\Omega$	63.7	12.0	12.0	42	24	12	6	8.0	3.0	4
SQH-30	30	1 $\Omega$ ~ 500 $\Omega$		75.0	19.0	18.0	56	30	17	8	10.0	3.0	4
SQH-40	40	1 $\Omega$ ~ 500 $\Omega$		90.0	19.0	18.0	68	30	17	8	10.0	3.0	4